

Residence 401 — ∞ — 1

LANDMARK

AT WATERFRONT

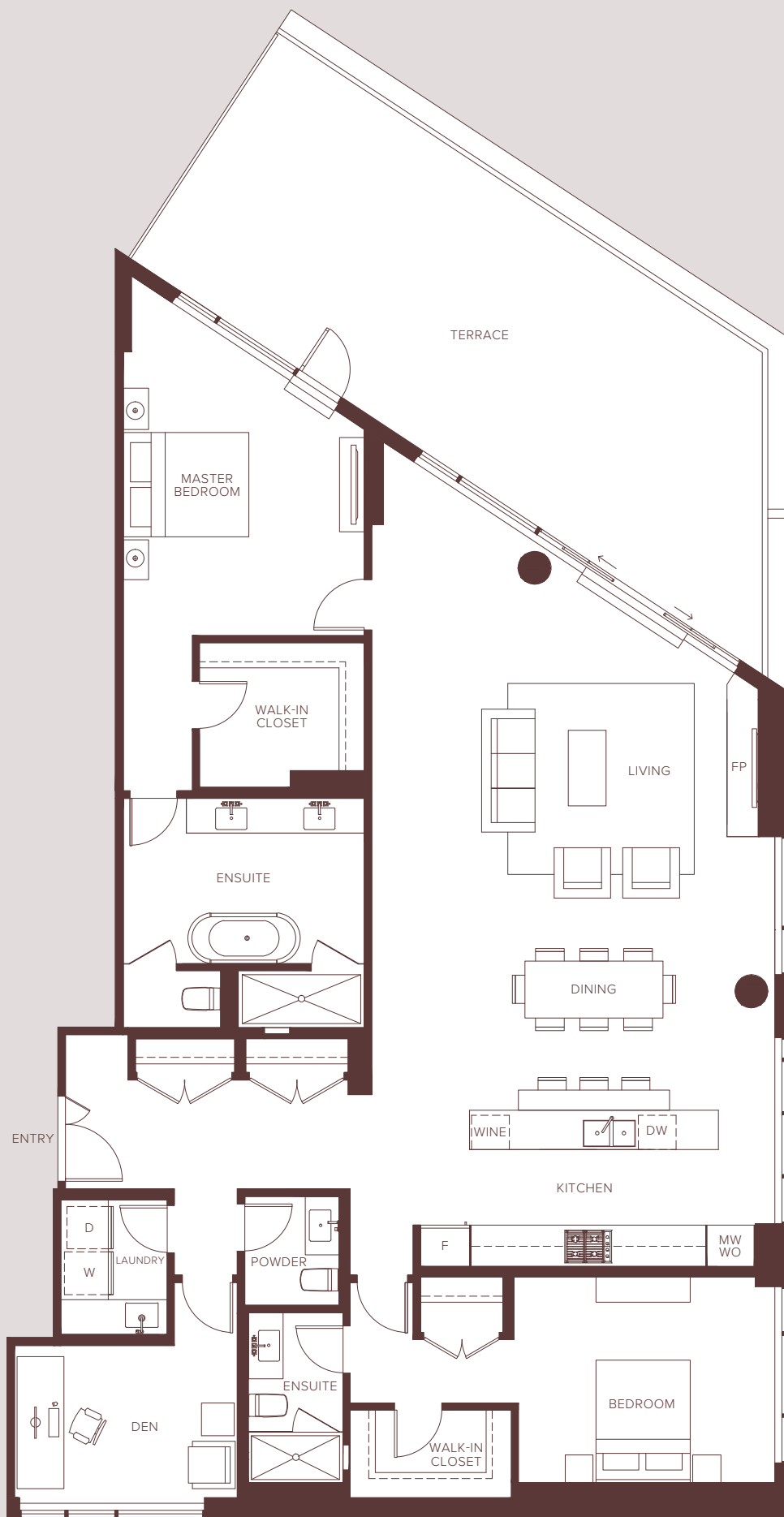
A Grand Finale on the Water's Edge

LANDMARK

AT WATERFRONT

128

Wrapped in oversized windows, this residence invites natural light into the large open-concept living area. Two convenient entry closets provide storage for all of your belongings.



BOW RIVER

Sub-Penthouse B

2 BEDROOM, DEN + 2.5 BATH

INTERIOR: 2,046 SF

EXTERIOR: 638 SF



Level 4

The developer reserves the right to make changes and modifications to the information contained herein. Floorplans and floorplates are subject to change without notice. Please contact a developer sales representative for details. The developer may also make such further development modifications as are permitted by the disclosure statement, as may be amended, the contract of purchase and sale between a purchaser and developer (if applicable), or otherwise. E. & O.E.